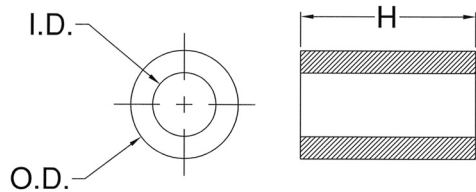
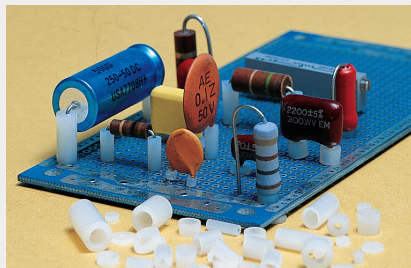


NYLON TUBULAR SPACERS

Universal Spacers for Discrete Components

- 4,182 Standard Sizes for "just Right" Fit
- Makes Solder Filletting and Board Cleaning More Effective



Universal Spacers give users an extremely wide selection of tubular spacers for mounting PCB discrete devices in any lead pattern and elevation.

Seventeen basic I.D./O.D. combinations with heights ranging from .030" (.76) through 1.250" (31.8), in .005" (.13) increments are available from factory stock or within two weeks.

Such a broad selection permits the user to choose the most suitable sizes for strength, elevation and ease of assembly, as well as providing for proper filletting and cleaning.

Ordering Information:

9XX XXX

Length Expressed in Inches
(Must be even multiples of .005")
or whole millimeters (example: 2mm)

0.030 = 030 0.750 = 750
0.100 = 100 1.250 = 1.250

Series

900 Series

Color: Natural

Series	"H" DIM.	I.D.	O.D.	A55485/06 M38527/06
901	.030-1.250 (.76-31.8)	.028 (.71)	.085 (2.2)	-029N
902	.030-1.250 (.76-31.8)	.032 (.81)	.125 (3.2)	-031N
903	.030-1.250 (.76-31.8)	.047 (1.2)	.156 (4.0)	-034N
904	.030-1.250 (.76-31.8)	.063 (1.6)	.187 (4.7)	-036N
905	.030-1.250 (.76-31.8)	.147 (3.7)	.250 (6.4)	-041N
906	.030-1.250 (.76-31.8)	.085 (2.2)	.148 (3.8)	-033N
907	.030-1.250 (.76-31.8)	.105 (2.7)	.167 (4.2)	-035N
908	.030-1.250 (.76-31.8)	.125 (3.2)	.187 (4.7)	-038N
910	.030-1.250 (.76-31.8)	.091 (2.3)	.250 (6.4)	-039N
911	.030-1.250 (.76-31.8)	.125 (3.2)	.250 (6.4)	-
912	.030-1.250 (.76-31.8)	.171 (4.3)	.250 (6.4)	-042N
913	.030-1.250 (.76-31.8)	.091 (2.3)	.187 (4.7)	-037N
937	.030-1.250 (.76-31.8)	.090 (2.3)	.125 (3.2)	-
938	.030-1.250 (.76-31.8)	.032 (.81)	.085 (2.2)	-030N
939	.030-1.250 (.76-31.8)	.047 (1.2)	.125 (3.2)	-032N
940	.030-1.250 (.76-31.8)	.063 (1.6)	.156 (4.0)	-
941	.030-1.250 (.76-31.8)	.135 (3.4)	.230 (5.8)	-

"H" Dimension	Price Code for 901, 902, 937, 938, 939	Price Code for 903, 904, 905, 906, 907, 908 910, 911, 912, 913, 940, 941
.030-.075 (.76-1.9)	U	W
.080-.150 (2.0-3.8)	V	W
.155-.230 (4.0-5.8)	W	X
.235-.310 (6.0-7.9)	X	Y
.315-.380 (8.0-9.7)	Y	Z
.385-.495 (9.8-12.6)	Z	ZZ
.500-.750 (12.7-19.1)	ZZ	ZZZ
.755-1.250 (19.2-31.8)	ZZZZ	ZZZZ

Examples:

901-050 is price code U 902-100 is price code V
903-120 is price code W 901-250 is price code X